



VELA Medical

DOLCE



IVORY - 773



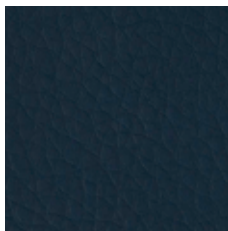
POPPY - 774



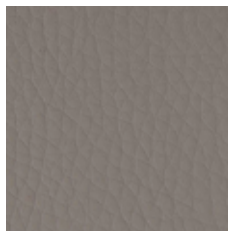
GRASS - 775



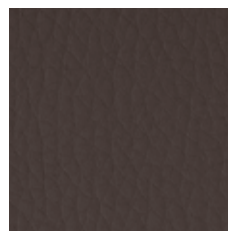
PEACOCK - 770



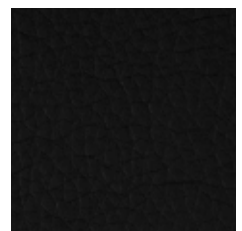
JET - 776



ARTESIAN - 772



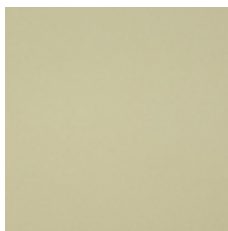
METEOR - 777



BLACK - 771

Top coat: 100% polyurethan :: Backing: 100% rayon :: Antibacterial Protected :: 300.000 cycles Martindale :: EN 1021-1 :: EN 1021-2 :: US Cal. Tech. Bull. 117

COMPOUND



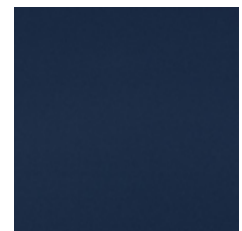
BEIGE - 820



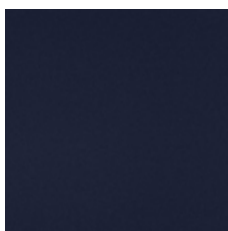
RED - 821



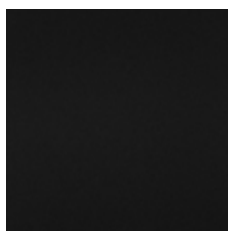
ORANGE - 822



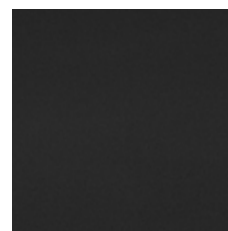
BLUE - 823



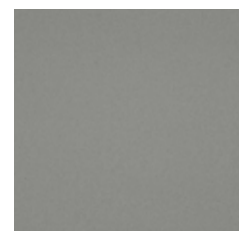
MARINE - 824



BLACK - 825



DARK GREY - 826



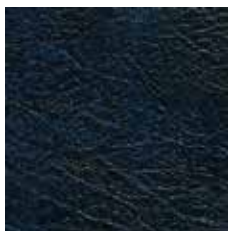
LIGHT GREY - 827

100% polyurethan, Silane-based, antimicrobia coating :: 100.000 cycles Martindale :: EN 1021-1 :: EN 1021-2 :: NFPA 260, US Cal. Tech. Bull. 117

SKAI AMBLA



WOODLAND YEW - 031



TINTO BLUE - 023

SKAI APOLLO



GREY - 057



BLACK - 052

Top coat: 100% PVC :: Backing 100% cotton :: 300.000 cycles Martindale :: EN 1021-1 :: EN 1021-2

Top coat: 88,7% PVC :: Backing 11,3% polyester :: 50.000 cycles DIN53359 :: EN 1021-1 :: EN 1021-2